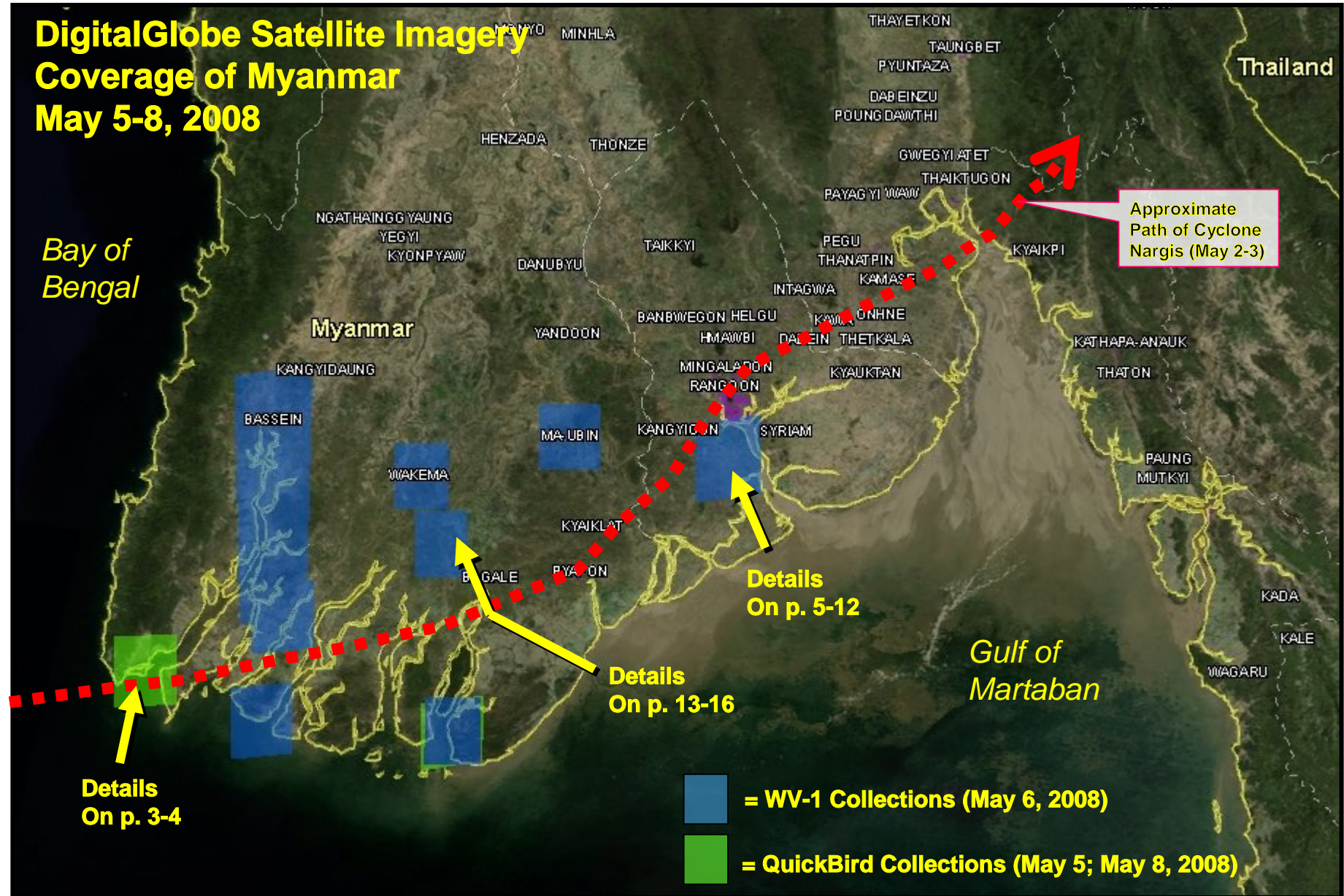


# **The Aftermath of Cyclone Nargis: Myanmar May 5-6, 2008**



**Flooded Fields Near Moulmeingyun, Myanmar  
WorldView-1 Satellite Image  
May 6, 2008**



A satellite image showing a coastal region in Myanmar. The image is a natural color QuickBird 2.4m resolution image. It shows a large body of water in the center, with a coastline on the left and right. The land is green and brown, indicating vegetation and some urban areas. The water is a mix of blue and green, suggesting varying depths and possibly some sediment or algae. The coastline is irregular, with several inlets and peninsulas. The image is taken from a high angle, looking down at the landscape.

**Before Cyclone**

**Kangyaing, Myanmar  
QuickBird 2.4m Natural Color Image  
November 11, 2004**

5/9/2008

DigitalGlobe Inc.

3

**After Cyclone**

**Area of Extensive  
Flooding**

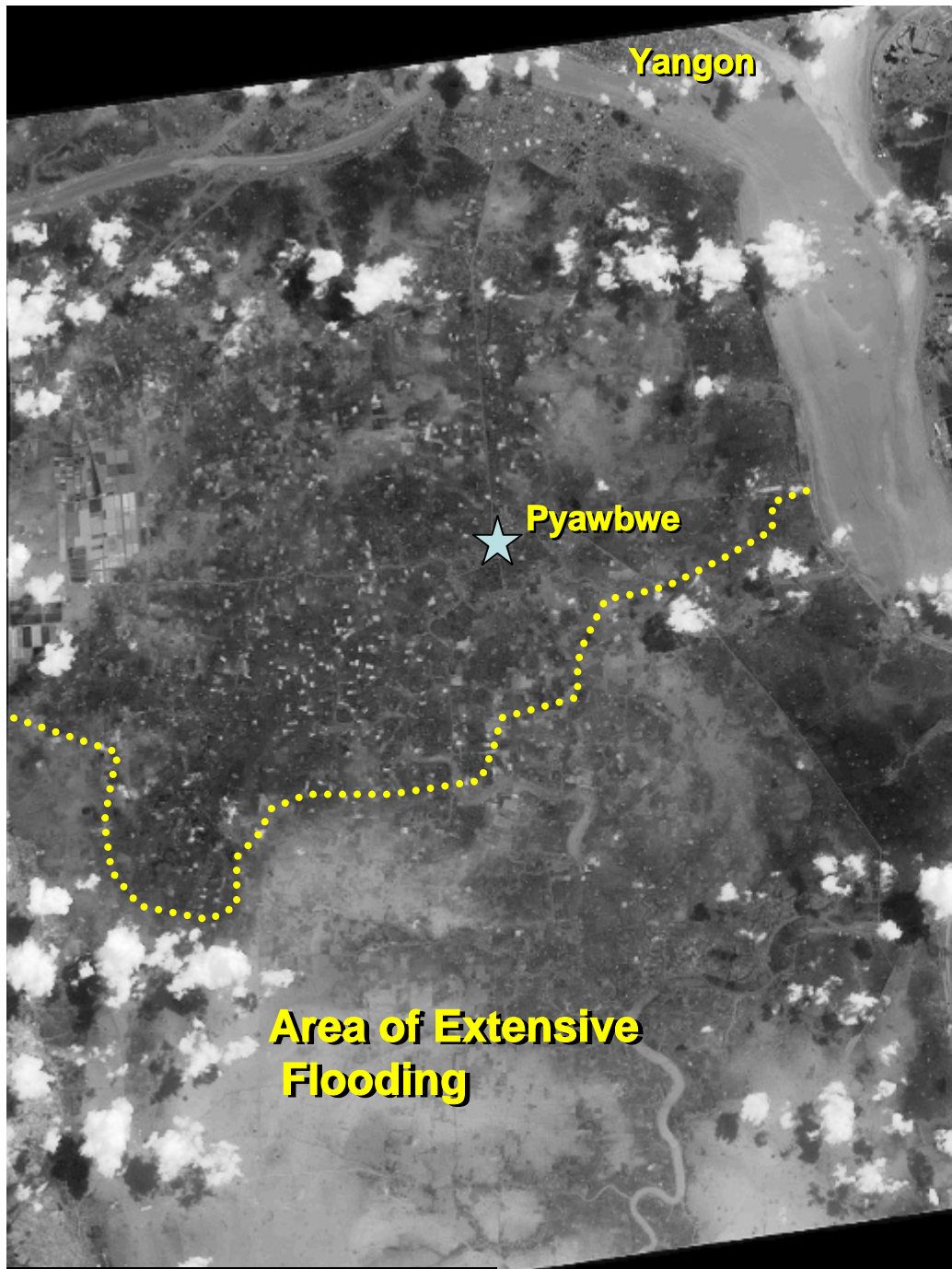
**Area of Extensive  
Flooding**

**Kangyaing, Myanmar  
QuickBird 2.4m Natural Color Image  
May 5, 2008**

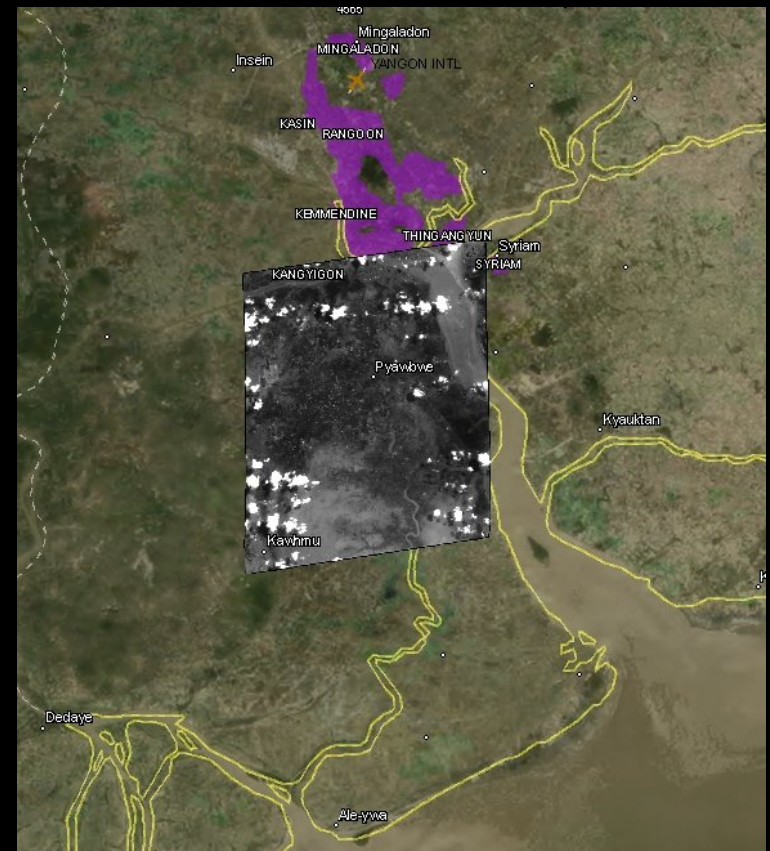
5/9/2008

DigitalGlobe Inc.

4



**WorldView-1 50cm Panchromatic Image  
May 6, 2008**



**WorldView-1 Image Area  
Collected May 6, 2008, Pyawbwe, South of  
Yangon**

**Small Village  
Near Pyawbwe**

**Before Cyclone**



**QuickBird 60cm Natural Color Image  
January 3, 2008**

## **Small Village Near Pyawbwe Completely Flooded**

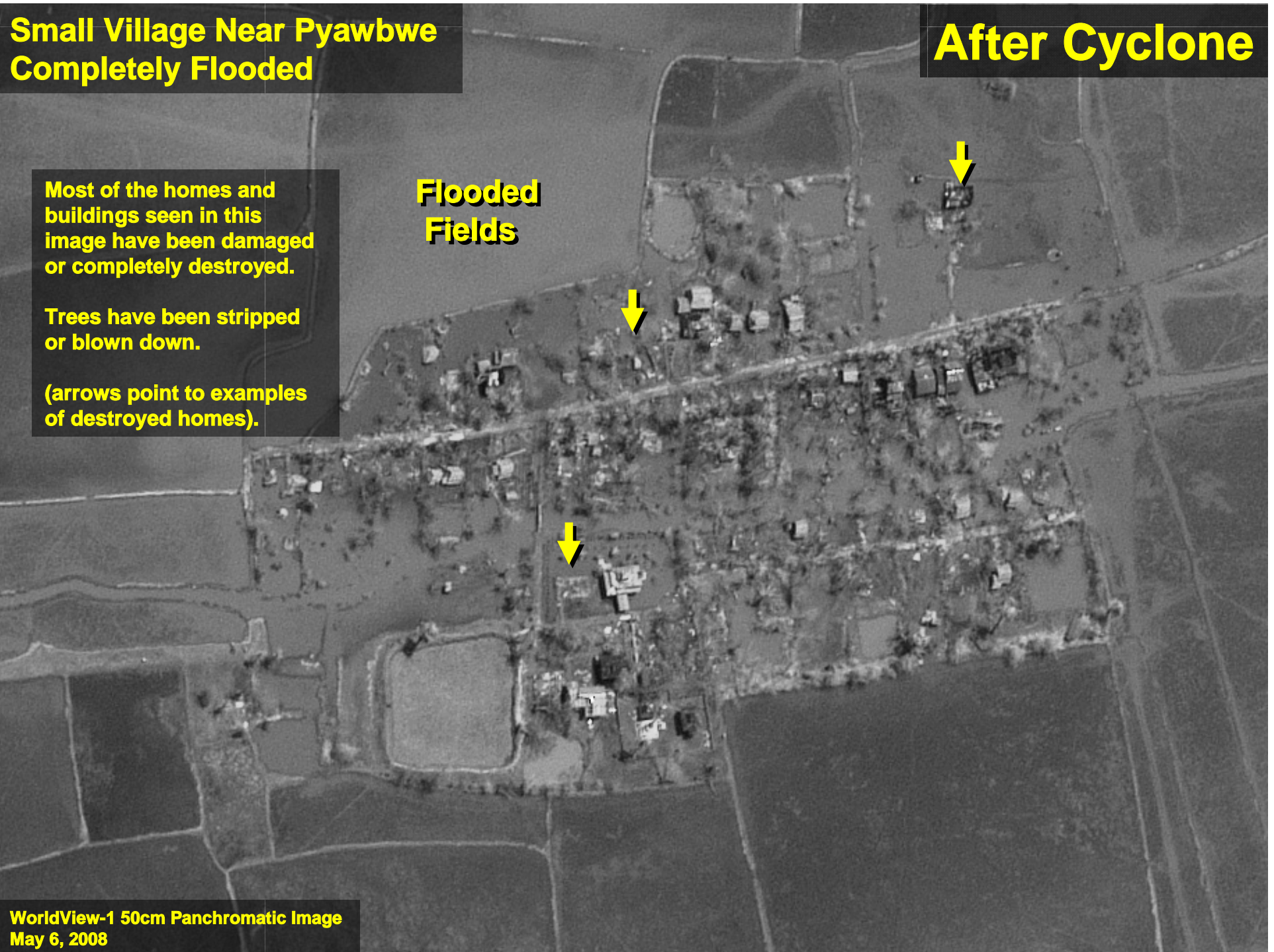
**After Cyclone**

**Most of the homes and  
buildings seen in this  
image have been damaged  
or completely destroyed.**

**Trees have been stripped  
or blown down.**

**(arrows point to examples  
of destroyed homes).**

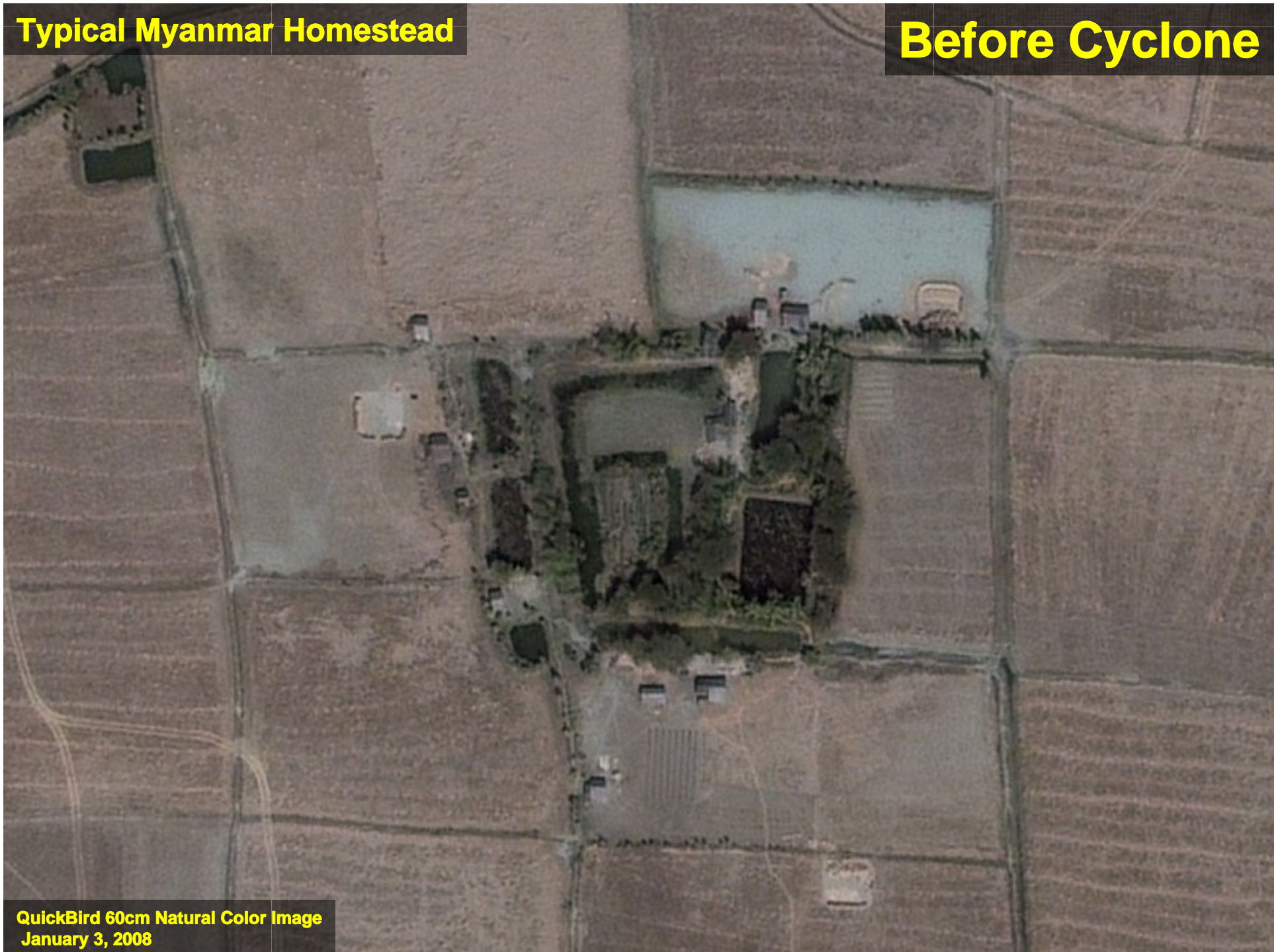
**Flooded  
Fields**



**WorldView-1 50cm Panchromatic Image  
May 6, 2008**

**Typical Myanmar Homestead**

**Before Cyclone**



**QuickBird 60cm Natural Color Image  
January 3, 2008**

**Typical Myanmar Homestead  
Completely Flooded**

**After Cyclone**

**Flooded  
Fields**

**Buildings have been  
destroyed or damaged.**

**Trees have been stripped  
or blown down. Area is  
currently flooded.**

**(arrows point to examples  
of submerged homes).**

**Flooded  
Fields**

**WorldView-1 50cm Panchromatic Image  
May 6, 2008**

**Flooded Neighborhood  
South of Yangon**

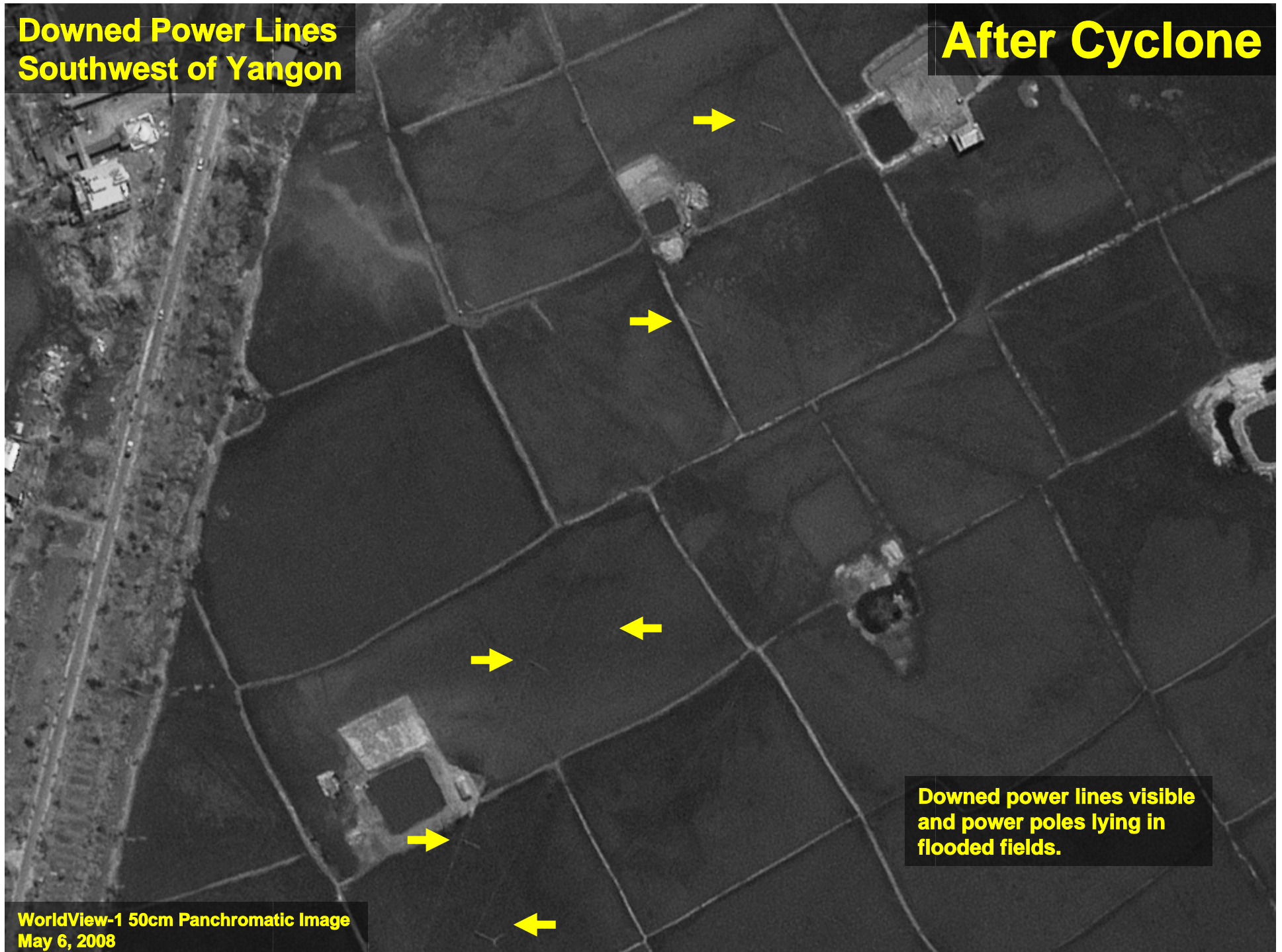
**After Cyclone**



**WorldView-1 50cm Panchromatic Image  
May 6, 2008**

**Downed Power Lines  
Southwest of Yangon**

**After Cyclone**



**Downed power lines visible  
and power poles lying in  
flooded fields.**

**WorldView-1 50cm Panchromatic Image  
May 6, 2008**

**Southern Yangon**

**After Cyclone**



**Arrows show  
Damaged buildings  
and downed trees.**

**WorldView-1 50cm Panchromatic Image  
May 6, 2008**

**Probable Military Facility  
Near Moulmeingyun, Myanmar**

**Before Cyclone**

**Location: 16-24-07N  
95-15-18E**

**Buildings**

**QuickBird 60-cm Natural Color Image  
April 25, 2005**



**Probable Military Facility  
Near Moulmeingyun, Myanmar**

**After Cyclone**

**Destroyed  
Buildings & Debris**

**Buildings Damaged  
or Destroyed**

**Vehicles/Trucks  
that were inside  
building**

**Destroyed  
Buildings**

**WorldView-1 50cm Panchromatic Image  
May 6, 2008**

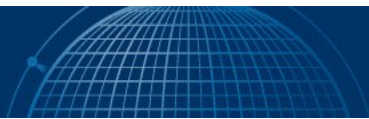


## Moulmeingyun, Myanmar

## Before Cyclone



QuickBird 60-cm Natural Color Image  
April 25, 2005



**Moulmeingyun, Myanmar**

**After Cyclone**



**Many Buildings Damaged  
in Area (roof/structural damage)**

**WorldView-1 50cm Panchromatic Image  
May 6, 2008**